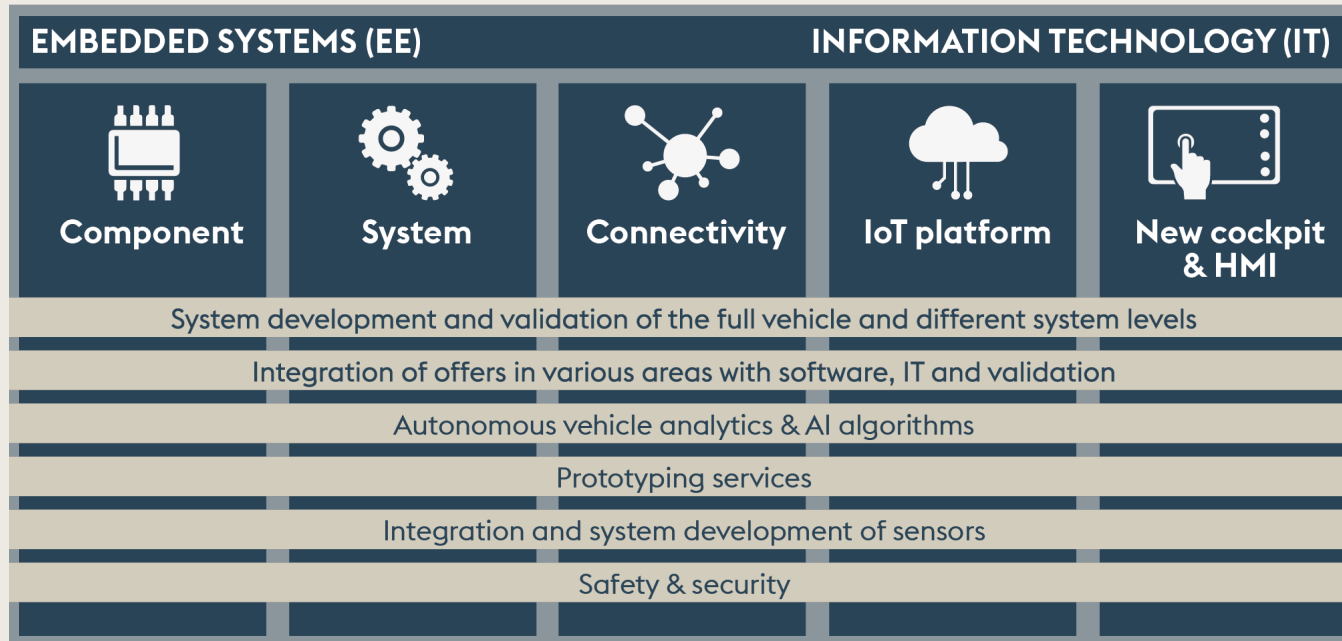


CENTER OF EXPERTISE ADAS & EE-SYSTEMS

OUR EXPERTISE



KEY FACTS

- >300 FTE in Germany working with ADAS & EE-Systems
- >30 customers and projects with large OEMs / Tier1
- >10 long-time key projects
- >1.600 sqm workshop in Munich
- Company own test area in Papenburg
- Functional safety according ISO 26262, 61508, 13849 and 25119
- Experience in autonomous functions since 2011

OUR ADDED VALUE

- Strong knowledge on vehicle mechanics, E/E and architecture
- Full expertise in E/E-systems from pre-development up to approval recommendation
- Broad spectrum and many years of know-how in sensors and ADAS


 We combine our longstanding experience and expertise of electric and electrical systems with top-notch topics in autonomous driving to be your premium solution provider.

CENTER OF EXPERTISE ADAS & EE-SYSTEMS

OUR PORTFOLIO

- Development of autonomous parking
- ADAS validation (real world and test area)
- Wiring Harness Prototype Production
- Energy/data network development over the complete V-cycle
- Development of E/E Architecture
- E/E-Integration
- Cable harness development and manufacture


SELECTED LIGHTHOUSE PROJECTS



AUTONOMOUS MOBILITY

ENGINEERING AND ARCHITECTURE OF YOUR DRIVERLESS MOBILITY SOLUTION

AUTONOMOUS MOBILITY, A SYSTEM OF SYSTEMS
Full autonomous driving technologies can be applied further than the automotive industry perspectives. When it comes to known environments and pre-defined outdoor paths, an autonomous system indeed enables to reinforce the reliability and the availability of a service while reducing costs for drivers:



From cargo transportation in a production line to shuttle service in a town center, a full autonomous mobility solution stands as a system of systems and requires rigorous engineering, architecture expertise and ground experience to be properly setup.



A SUPPORT IN PRODUCT AND OPERATION DESIGN
A full autonomous mobility solution is a complex product that includes several sub-systems:

- The vehicle themselves and their autonomous functions
- The fleet management system and its monitoring solutions
- The infrastructure and its potential existing systems

They must run all together and under logistic and safety constraints. At every level, AKKA can bring methodology, manpower in product development, support in the operation setup and a strong network of suppliers' solutions to meet the high-level requirement of the overall system.

OUR ADDED VALUE

- An existing AD software stack, rewarded by a road transport authority
- A recognized system engineering and safety expertise gained in both aeronautics and automotive industries
- A strong knowledge on vehicles mechanics, EE and architecture
- A network of components or sub-systems providers
- An experience on several autonomous systems for different platforms


LEITUNGSSATZ

LEITUNGSSATZMANUFAKTUR


Die zunehmende Komplexität und Varianz moderner E/E-Systeme im Automobil haben direkten Einfluss auf das elektrische Bordnetz und die Verkabelung. Die Entwicklung und Fertigung elektrischer Leitungssätze verlangt Expertenwissen und professionelles Know-how.

ALLES AUS EINER HAND
Durch enge Zusammenarbeit zwischen Entwicklung und Fertigung garantieren wir kurze Kommunikationswege in allen Entwicklungsphasen und damit höchste Effizienz.

LEITUNGSSATZENTWICKLUNG



LEITUNGSSATZMANUFAKTUR



Als erfahrener Entwicklungsdienstleister unterstützen wir mit unseren kurzen Reaktionszeiten und hoher Qualität namhafte Kunden im automotive bzw. Non-Automotive Bereich.

Neben klassischer Kabelnetzfunktionen bieten wir auch Leitungssatzumbauten, Testaufbauten, Prüfstände und diverse Messboxen an.

OUR KNOW-HOW

- FLR
- Datenleitungen
- Coax-Kabel
- Temperaturstabile Kabel
- Hochflexibles Kabel
- HV-Leitungen

KONTAKTE

- MQS
- SLK
- JPT
- LSK
- und viele weitere
- DPT
- MELK
- MCP
- nano-MQS

STECKER

- Lemo
- Harting
- Molex
- und viele weitere
- TEConnectivity
- Rosenberger
- ITT

GEBÄUDE

- Kunststoff- und Aluminiumgehäuse

